

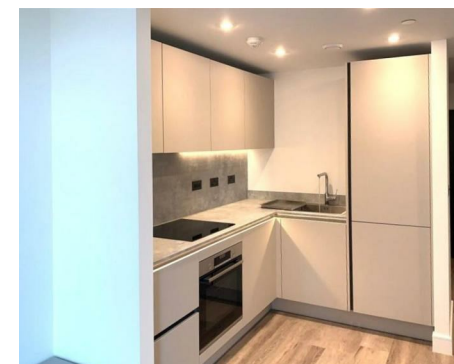
Let **UK** Home

1 Bedrooms

Flat

**Located
in Birmingham**

£1,080 Per Month



pmadmin@letukhome.co.uk

<https://www.letukhome.co.uk/>

0121 828 8955



64 Shadwell Street Birmingham

B4 6LR



Let UK Home are excited to offer this stunning one-bedroom apartment in The Regent within the Snow Hill Wharf development, nestled between the tranquil canal-side and vibrant Jewellery Quarter.

The flat comprises a spacious open kitchen with a stylishly attached dining area, a magnificent living room leading to a private balcony, one bright bedroom with built-in wardrobe and one modern bathroom.

Snow Hill Wharf is just moments from major transport connections at Snow Hill, New Street, and is also situated close to Birmingham Children's Hospital as well as Colmore Row. Close to Birmingham's fantastic array of shops and restaurants, each apartment will also benefit from an exclusive concierge service and residents-only facilities, including a gym, sauna, steam room, cinema and lounge.

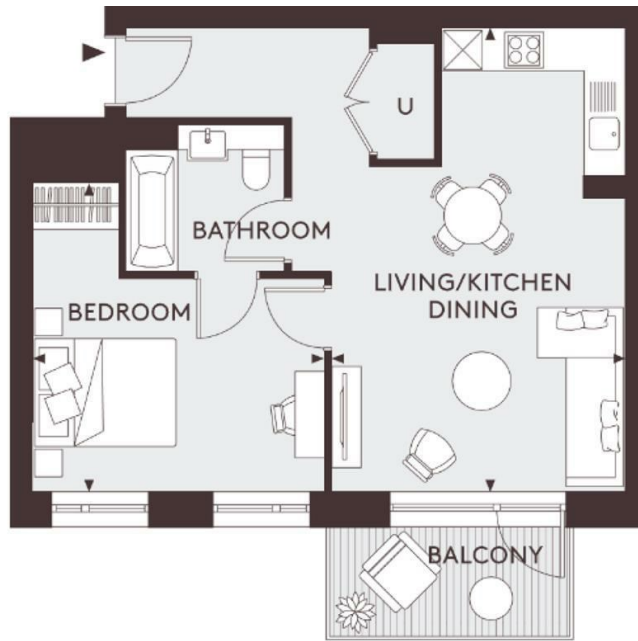
From the apartment, you can walk to 3 Michelin restaurants (Opheem, Purnell's, Adam's), many cafes and bars, Chinatown, Selfridges, Bullring & Grand Central and 12 theaters and cinemas of varying sizes. St Philip's Cathedral and the Library of Birmingham are also within walking distance. Additionally, this apartment is within walking distance to China Town, where there are many Chinese restaurants, enough to satisfy the Chinese appetite!

64 Shadwell Street Birmingham

£1,080 Per Month

- 24h Security
- The Gym
- Residents Lounge
- EPC Rating:B
- Concierge Service
- Sauna & Steam Room
- Cinema & Game Room





APARTMENT

Total Area	52.1 sq m	561.1 sq ft
Kitchen/Living/Dining	6.39m x 4.14m	20'11" x 13'7"
Bedroom	4.08m x 4.32m	13'5" x 14'2"
Balcony	5.0 sq m	53.8 sq ft



Let **UK** Home

Let UK Home
 JQ Modern 120 Vyse St
 Birmingham
 B18 6NF

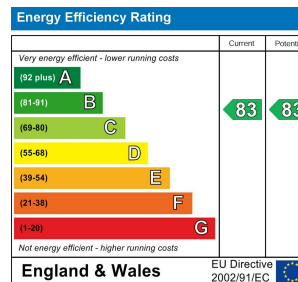
0121 828 8955

padmin@letukhome.co.uk

Council Tax Band: D

Local Authority:

Agents Note: Whilst every care has been taken to prepare these particulars, they are for guidance purposes only. All measurements are approximate and are for general guidance purposes only and whilst every care has been taken to ensure their accuracy, they should not be relied upon and potential buyers/tenants are advised to recheck the measurements.



<https://www.letukhome.co.uk/>